

[www.FSProBin.com](http://www.FSProBin.com)

## Features of the FSProBin™

- Four standard designs approved by Taco Bell Engineering for existing production lines
- Meets Taco Bell hold time requirements and mandated NSF7 standard refrigeration requirements
- Heavy duty 18 gauge 304 stainless steel construction
- Lower cost alternative to a complete production line change-out
- Extends the life of existing production lines
- Higher efficiency lowers facility operating costs compared to underperforming produce bins
- Improves brand quality and customer satisfaction
- Significantly lowers risk of foodborne illness
- Installation arranged by FSI or performed by operators' contractor
- Backed by 10 year material and workmanship warranty



MANUFACTURER OF THE FSPROBIN™  
AN APPROVED PRODUCE BIN RETROFIT

For More Information Contact:

Facility Solutions, Inc.  
Danielle Kraj  
dkraj@facilitiesolutionsinc.com  
(586) 741-0048

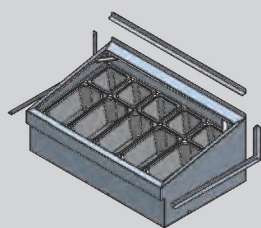
RSCS Sales Representative  
(800) 444-7868



## Design Highlights

[www.FSProBin.com](http://www.FSProBin.com)

- 18 gauge 304 stainless steel
- Seamless welded construction
- Fully insulated copper coil design
- 115 volt/single phase
- UL Listed Copeland compressor
- 404A refrigerant
- Dual line models include on/off switch on dining room side
- Accomodates 1/6 and 1/3 size pans
- Warranty:
  - 10 year material and workmanship on FSProBin
  - 1 year condensing unit
  - 90 days refrigeration components



### Single Line 38

RSCS E# E56640013

Existing Produce Bin Dimensions  
37.5" x 23"

FSProBin Dimensions  
37.125" x 23.5"

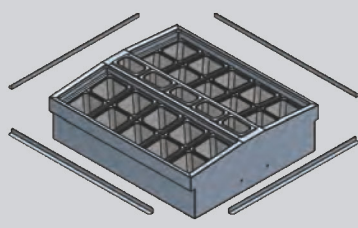
Divider Bars - 1

Condensing Unit - 1/2 HP

Refrigerant - 404A

11.5 MCA / 15 Amp Max Fuse

Trim Kit Included



### Dual Line 38

RSCS E# E56640043

Existing Produce Bin Dimensions  
38.25" x 33"

FSProBin Dimensions  
37.875" x 34.125"

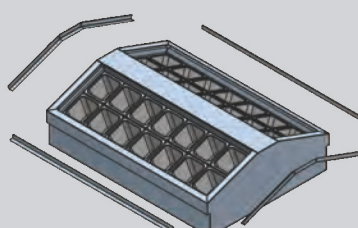
Divider Bars - 12

Condensing Unit - 3/4 HP

Refrigerant - 404A

20.8 MCA / 30 Amp Max Fuse

Trim Kit Included



### Dual Line 48

RSCS E# E56640101

Existing Produce Bin Dimensions  
48.25" x 36.25"

FSProBin Dimensions  
47.75" x 36"

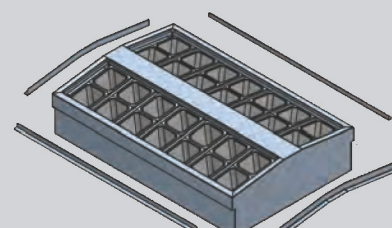
Divider Bars - 12

Condensing Unit - 1/2 HP

Refrigerant - 404A

11.5 MCA / 15 Amp Max Fuse

Trim Kit Included



### Dual Line 52

RSCS E# E56640099

Existing Produce Bin Dimensions  
52" x 34"

FSProBin Dimensions  
51.625" x 34.75"

Divider Bars - 12

Condensing Unit - 3/4 HP

Refrigerant - 404A

20.8 MCA / 30 Amp Max Fuse

Trim Kit Included



Facility Solutions, Inc.  
info@facilitiesolutionsinc.com  
(586) 741-0048  
www.facilitiesolutionsinc.com

FSProBin™ is a registered trademark of Facility Solutions, Inc. Because we are continuously improving our products and services, Facility Solutions, Inc reserves the right to change specifications without prior notice. Facility Solutions, Inc. is an equal opportunity employer.